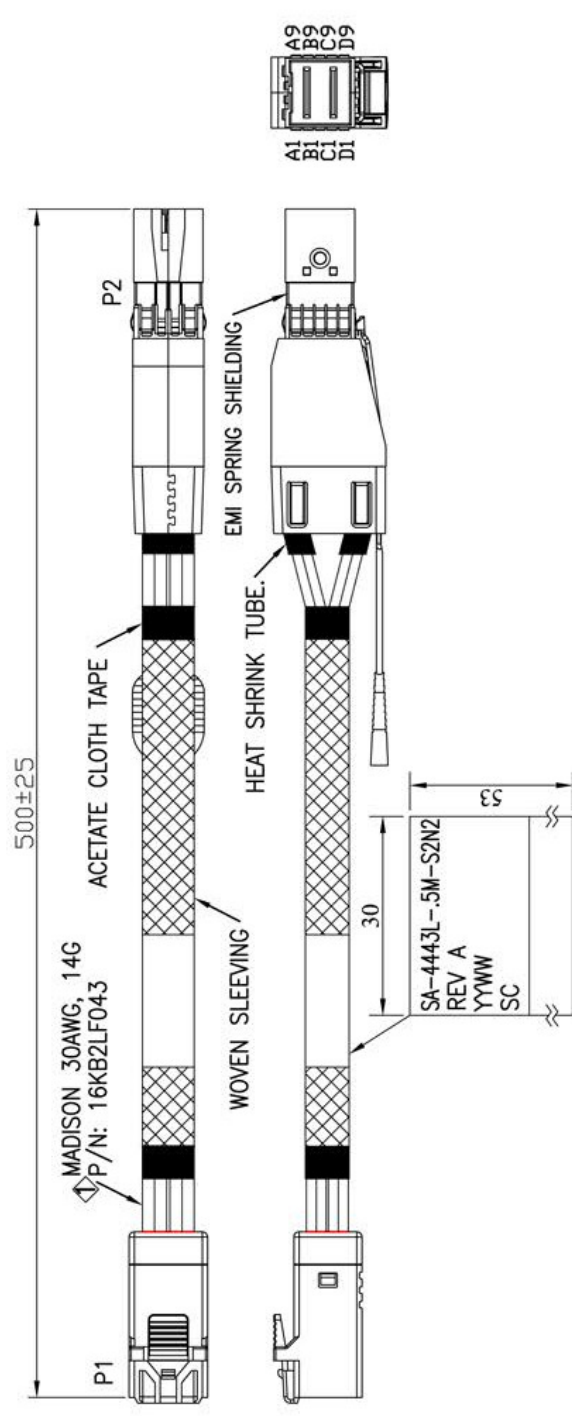


RoHS

REV.	REMARK	DATE	SIGN.
1	CHANGE CABLE	08/19/14	Sino

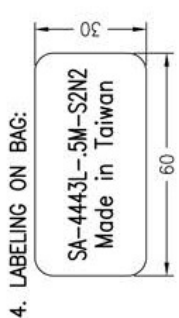


**MATERIAL RoHS COMPLIANT:**

1. CABLE:  
 CONDUCTOR: 30AWG SOLID SILVER PLATED COPPER.  
 INSULATION: FOAM POLYOLEFIN.  
 PAIR: 2 SINGLES LAID FLAT AND PARALLEL.  
 PAIR DRAIN WIRE: 30AWG SOLID SILVER PLATED COPPER.  
 PAIR SHIELD: ALUMINUM/POLYESTER TAPE,  
 ALUMINUM SIDE FACING IN, 25% OVERLAP.  
 INNER SHIELD: ALUMINUM/POLYESTER TAPE,  
 ALUMINUM SIDE FACING OUT, 25% OVERLAP.  
 DIFFERENTIAL IMPEDANCE: 100±5 OHMS @TDR  
 UL LISTING: TYPE CL2 AS SPECIFIED IN ARTICLE 725  
 OF THE NATIONAL ELECTRICAL CODE.

2. CONNECTOR:  
 P1: Mini SAS HD 4i CABLE PLUG (SFF-8643)  
 (1) P.C.B: 4 LAYERS, GOLD PLATING ON CONTACT PADS, WITHOUT CARBON (P/N: MPCB-040115LF REV.A / MPCB-040116LF REV.A)  
 (2) HOUSING: PBT, BLACK.  
 P2: Mini SAS HD 4x CABLE PLUG (SFF-8644)  
 (1) P.C.B: 4 LAYERS, GOLD PLATING ON CONTACT PADS, WITHOUT CARBON (P/N: MPCB-040113LF REV.A / SPCB-040114A)  
 (2) LATCH: STAINLESS STEEL  
 (3) BACKSHELL- ZINC DIE CASTING HOOD/ NICKEL PLATING  
 (4) PULL TAB: NYLON UL94V-0, COLOR: BLUE.  
 (5) EMI SPRING SHIELDING

3. TWO-WIRED SERIAL MEMORY: ATMEL AT24C02B EEPROM (256 BYTES).



DESC.	Mini SAS HD 4i/Mini SAS HD 4x CABLE ASS'Y	APPROVED	CHECKED	DESIGNED	TOLERANCE	SCALE	*	UNIT	mm
P/N	UA55-RC006062			Sino					
	CUSTOMER P/N SA-4443L-5M-S2N2								
							DATE	08/19/14	DWG NO: DWG\RC\6062

1	2	3	4	5	6	7	8	9
REV. REMARK		DATE		SIGN.				
◇	REVISE LOW SPEED SIGNAL & POWER			08/19/14	Sino			

**WIRING DIAGRAM**

HIGH SPEED SIGNAL		P2(Mini SAS HD 4x Plug)	
PIN	SIGNAL	PAD	SIGNAL
A4	RX1+	C4	TX1+
A5	RX1-	C5	TX1-
A7	RX3+	C7	TX3+
A8	RX3-	C8	TX3-
B4	RX0+	D4	TX0+
B5	RX0-	D5	TX0-
B7	RX2+	D7	TX2+
B8	RX2-	D8	TX2-
C4	TX1+	A4	RX1+
C5	TX1-	A5	RX1-
C7	TX3+	A7	RX3+
C8	TX3-	A8	RX3-
D4	TX0+	B4	RX0+
D5	TX0-	B5	RX0-
D7	TX2+	B7	RX2+
D8	TX2-	B8	RX2-
GND GROUP	GND	GND GROUP	GND

GND GROUP 1:  
P1-A3,A6,A9,B3,B6,B9, P2-C3,C6,C9,D3,D6,D9

GND GROUP 2:  
P1-C3,C6,C9,D3,D6,D9, P2-A3,A6,A9,B3,B6,B9

LOW SPEED SIGNAL & POWER		P2(Mini SAS HD 4x Plug)	
PAD	SIGNAL	PAD	SIGNAL
A1	Reserved	A1	N.C.
A2	IntL	A2	N.C.
B1	Vact	B1	N.C.
B2	ModPrsL	B2	▷ GND
C1	SCL	C1	SERIAL EEPROM
C2	SDA	C2	▷ GND
D1	Vact	D1	N.C.
D2	Vman	D2	◁



DESC.	Mini SAS HD 4i/Mini SAS HD 4x CABLE ASS'Y	APPROVED	CHECKED	DESIGNED	TOLERANCE	SCALE	* DATE	UNIT	mm
P/N	UASS-RC006062			Sino	*	DATE	08/19/14	DWG NO:	DWG\RC\6062

1	2	3	4	5	6	7	8	9
---	---	---	---	---	---	---	---	---