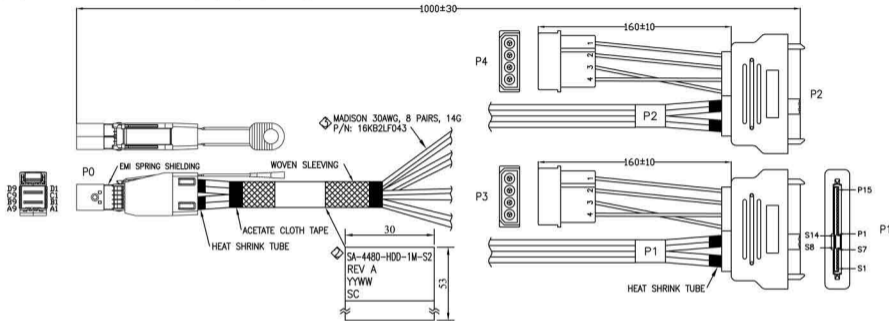


REV.	REMARK	DATE	SIGN.
◇	Add SAS DRIVE P/N	02/25/'13	Sino
◇	REVISE CUSTOMER P/N	08/12/'13	Sino
◇	CHANGE CABLE	10/25/'13	Sino

RoHS



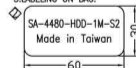
MATERIAL RoHS COMPLIANT:

- ◇ 1.CABLE:
 CONDUCTOR: 30AWG SOLID SILVER PLATED COPPER.
 INSULATION: FOAM POLYOLEFIN.
 PAIR: 2 SINGLES LAID FLAT AND PARALLEL.
 PAIR DRAIN WIRE: 30AWG SOLID SILVER PLATED COPPER.
 PAIR SHIELD: ALUMINUM/POLYESTER TAPE.
 ALUMINUM SIDE FACING IN, 25% OVERLAP.
 INNER SHIELD: ALUMINUM/POLYESTER TAPE.
 ALUMINUM SIDE FACING OUT, 25% OVERLAP.
 DIFFERENTIAL IMPEDANCE: 100±5 OHMS @TDR
 UL LISTING: TYPE CL2 AS SPECIFIED IN ARTICLE 725
 OF THE NATIONAL ELECTRICAL CODE.

2.CONNECTOR:

- P0: Mini SAS HD 4x CABLE PLUG (SFF-8644)
 (1) P.C.B: 4 LAYERS, GOLD PLATING ON CONTACT PADS, WITHOUT CARBON
 (P/N: MPCB-040113LF REV.A / SPCB-040114A)
 (2) LATCH: STAINLESS STEEL
 (3) BACKSHELL- ZINC DIE CASTING HOOD/ NICKEL PLATING
 (4) PULL TAB: NYLON UL94V-0, COLOR: BLUE.
 (5) EMI SPRING SHIELDING
 ◇ P1,P2: SAS DRIVE REC.(SFF-8680)(MSAS-F29S001G)
 P3,P4: 4 POSITION DC POWER PLUG
 POWER CABLE: UL 1007 18AWG 80°C 300V

3.LABELING ON BAG:



Serial Cables, LLC

DESC.	Mini SAS HD 4x to 2*SAS drive cable rec. with power cable ass'y	APPROVED	CHECKED	DESIGNED	TOLERANCE	SCALE	*	UNIT	mm	☉
P/N	UASS-RC005925	CUSTOMER P/N	SA-4480-HDD-1M-S2	Sino		DATE	10/25/'13	DWG NO:	DWG\RC\5925	

1	2	3
REV.	REMARK	SIGN.

WIRING DIAGRAM						
Mini SAS HD 4x (HOST)(P0)		SAS DRIVE CABLE REC.(TARGET)	4P POWER PLUG			
PIN	SIGNAL	rec.	PIN	SIGNAL	plug PIN SIGNAL	
B4	RX0+	P1	S6	TP+	P3	1 +12V 2 GND 4 +5V 3 GND
B5	RX0-		S5	TP-		
D5	TX0-		S3	RP-		
D4	TX0+		S2	RP+		
GND GROUP			S1,S4,S7	GND		
A4	RX1+		S13	TP+		
A5	RX1-		S12	TP-		
C5	TX1-		S10	RP-		
C4	TX1+		S9	RP+		
GND GROUP			S8,S11,S14	GND		
		P13,P14,P15	+12V	P4	1 +12V 2 GND 4 +5V 3 GND	
		P10,P11,P12	GND			
		P7,P8,P9	+5V			
		P4,P5,P6	GND			
B7	RX2+	P2	S6			TP+
B8	RX2-		S5			TP-
D8	TX2-		S3			RP-
D7	TX2+		S2			RP+
GND GROUP			S1,S4,S7			GND
A7	RX3+		S13			TP+
A8	RX3-		S12	TP-		
C8	TX3-		S10	RP-		
C7	TX3+		S9	RP+		
GND GROUP			S8,S11,S14	GND		

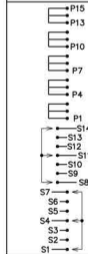
GND GROUP:
A3,A6,A9,B3,B6,B9,
C3,C6,C9,D3,D6,D9.

LOW SPEED SIGNAL & POWER

P0(Mini SAS HD 4x Plug)

PAD	SIGNAL	
A1	Reserved	N.C.
A2	IntL	N.C.
B1	Vact	N.C.
B2	ModPrsL	GND
C1	SCL	SERIAL EEPROM
C2	SDA	
D1	Vact	Vman
D2	Vman	Vman

SAS DRIVE REC. GND PLATE



Serial Cables, LLC

DESC.	Mini SAS HD 4x TO 2*SAS drive cable rec. with power cable ass'y	APPROVED	CHECKED	DESIGNED	TOLERANCE	SCALE	*	UNIT	mm	
P/N	UASS-RC005925	CUSTOMER P/N		Sino		DATE	03/07/13	DWG NO:	DWG\RC\5925	