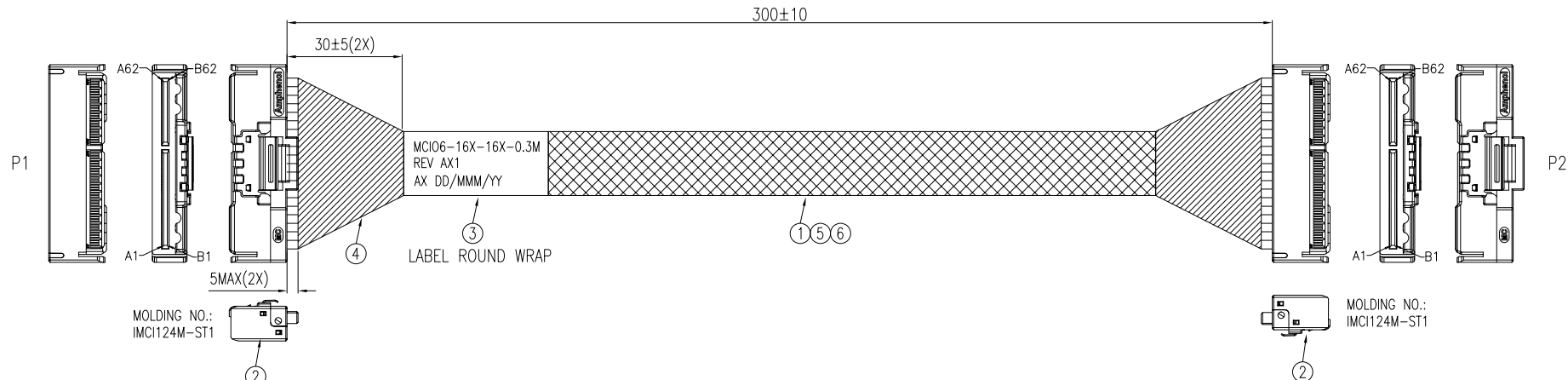


The marking on this product doesn't contain environmental hazardous, materials per directive 2011/65/EU for RoHS compliant.

REVISIONS

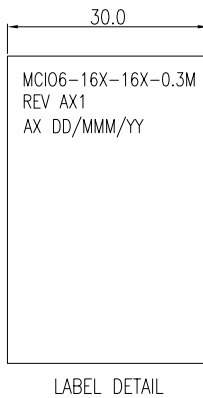
ECN NO.	REV.	DESCRIPTIONS	CHECKED	APPROVED	DATE
REL.	AX1	INITIAL RELEASE	WILSON	JEFF	06/11/2024

- NOTE:
 1.THE CABLE ASSEMBLY SHALL BE MEET RoHS2.0 COMPLIANT.
 该产品通过RoHS2.0认证。
 2.THE CABLE ASSEMBLY SHALL MEET BELOW IMPEDANCE REQUIREMENT:
 TERMINATION AREA: 85±10% OHMS, CABLE ABSOLUTE AREA: 85±10% OHMS.
 该产品满足下面阻抗特性: 接触区域85±10%欧姆, 线材为85±10%欧姆。
 3.ELECTRICAL AND MECHANICAL PERFORMANCE SHALL MEET PCIE GEN6 SPECIFICATION.
 电气性能满足PCIE GEN6规范。
 4.IL SPEC:-3.8dB@16GHz.



MOLDING NO.:
IMC124M-ST1

MOLDING NO.:
IMC124M-ST1



6	HMTBD0XXXX	EXPANDO TUBE,BLACK,HF	A/R
5	RWFC300070-5C	FLT CBL,UL2678,30#,1/0.254,5C,0.635PH,PVC,GRY,W/RED LINE,VW-1,6P Free,R2	A/R
4	HMMTP0XXXX	TAPE,BLK,HF	A/R
3	HMLSB30701	LABEL:30*70MM,WHT	1
2	MCIO-124ST-05-V	MCIO 16X STR,V0,85ohm	2
1	HWSS300186-L-1P	HS SAS CBL,UL22258,30#2C+H.AI+2D+HM,85ohm,COLOR SILVER,VW-1,HF	A/R
ITEM	VENDOR P/N	DESCRIPTION	QTY

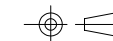
This drawing is the property of Serial Cables Corporation and is delivered on the express condition that it is not to be disclosed, reproduced or used, in whole or in part, for manufacture or sale by anyone other than Serial Cables Corporation without its prior consent, and that no right is granted to disclose or use any information in this drawing.



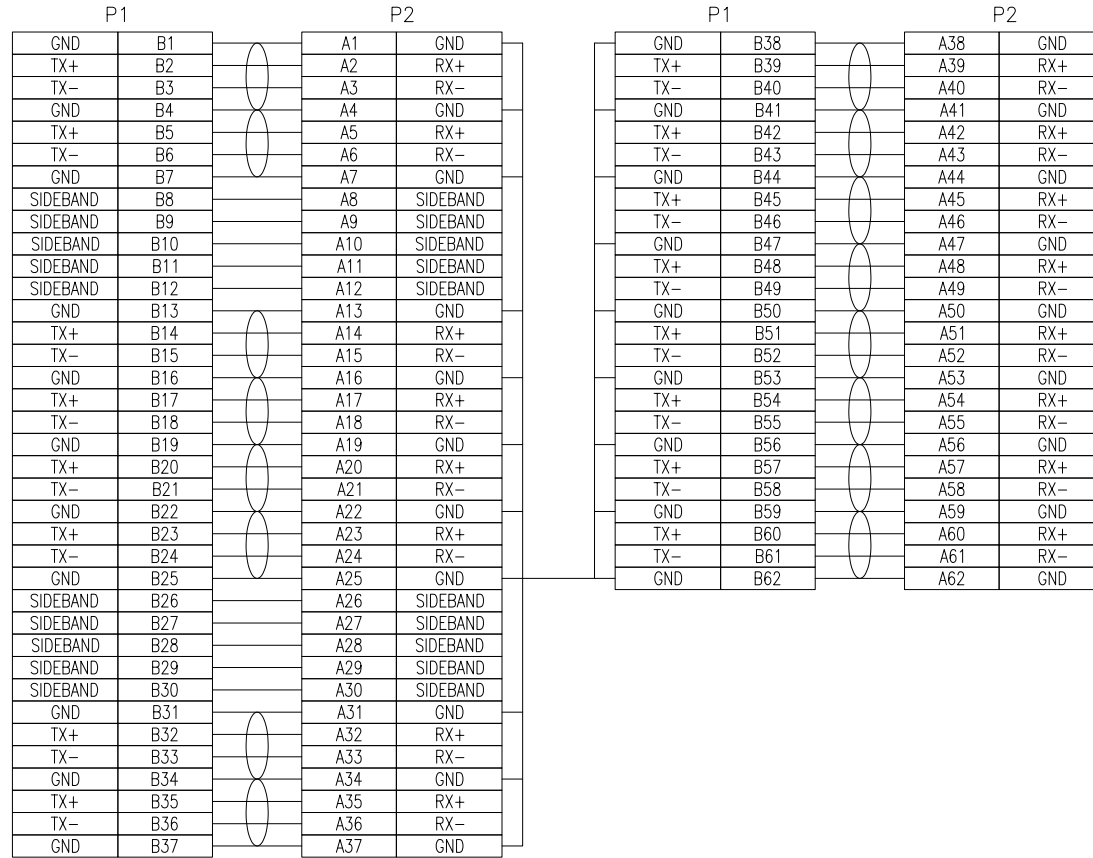
TITLE: SC P/N:MCIO6-16X-16X-0.3M MCIO 16X STR TO MCIO 16X STR ASSY		
DWG. No.: RMC124-1628		
SCALE: NONE	SHEET 1 OF 4	
UNIT: MM	SIZE: A4	REV.: AX1

GENERAL TOLERANCES	
.X:	± 0.5
.XX:	± 0.3
.XXX:	± 0.15
ANGULAR:	± 1°

DRAWN: DEVIN ZHOU	DATE: 06/11/2024
CHECKED: WILSON HU	DATE: 06/11/2024
APPROVED: JEFF HE	DATE: 06/11/2024



The marking on this product doesn't contain environmental hazardous, materials per directive 2011/65/EU for RoHS compliant.



WIRE DIAGRAM

THE DIFFERENTIAL SIGNAL CABLE
 THE SHIELD IS AL-MYLAR

GENERAL TOLERANCES

.X:	± 0.5
.XX:	± 0.3
.XXX:	± 0.15
ANGULAR:	± 1°

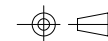
This drawing is the property of Serial Cables Corporation and is delivered on the express condition that it is not to be disclosed, reproduced or used, in whole or in part, for manufacture or sale by anyone other than Serial Cables Corporation without its prior consent, and that no right is granted to disclose or use any information in this drawing.

DRAWN:	DEVIN ZHOU	DATE:	06/11/2024
CHECKED:	WILSON HU	DATE:	06/11/2024
APPROVED:	JEFF HE	DATE:	06/11/2024



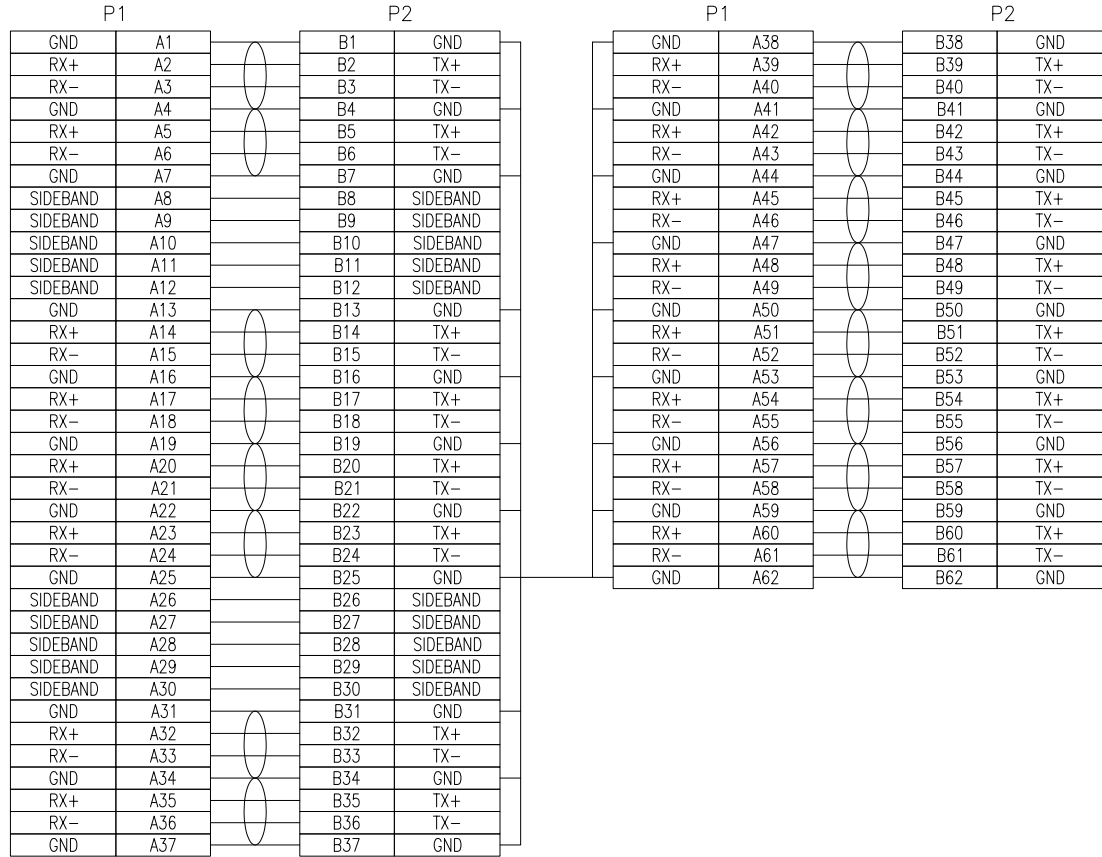
TITLE:
 SC P/N: MCI06-16X-16X-0.3M
 MCI0 16X STR TO MCI0 16X STR ASSY

DWG. No.: RMC124-1628



SCALE: NONE
 SHEET 2 OF 4
 UNIT: MM SIZE: A4 REV.: AX1

The marking on this product doesn't contain environmental hazardous, materials per directive 2011/65/EU for RoHS compliant.



WIRE DIAGRAM

THE DIFFERENTIAL SIGNAL CABLE
THE SHIELD IS AL-MYLAR

GENERAL TOLERANCES	
.X:	± 0.5
.XX:	± 0.3
.XXX:	± 0.15
ANGULAR:	± 1°

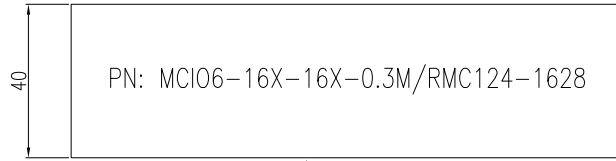
This drawing is the property of Serial Cables Corporation and is delivered on the express condition that it is not to be disclosed, reproduced or used, in whole or in part, for manufacture or sale by anyone other than Serial Cables Corporation without its prior consent, and that no right is granted to disclose or use any information in this drawing.

DRAWN:	DEVIN ZHOU	DATE:	06/11/2024
CHECKED:	WILSON HU	DATE:	06/11/2024
APPROVED:	JEFF HE	DATE:	06/11/2024

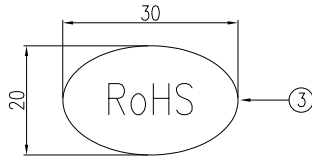


TITLE:		
SC P/N: MCI06-16X-16X-0.3M MCI0 16X STR TO MCI0 16X STR ASSY		
DWG. No.: RMC124-1628		
	SCALE:	NONE
	UNIT:	MM
	SIZE:	A4
	REV.:	AX1
SHEET 3 OF 4		

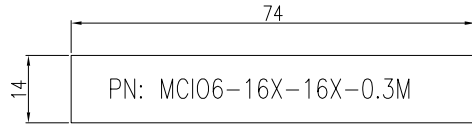
The marking on this product doesn't contain environmental hazardous, materials per directive 2011/65/EU for RoHS compliant.



②

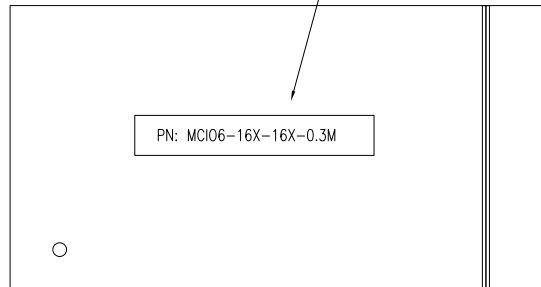


③



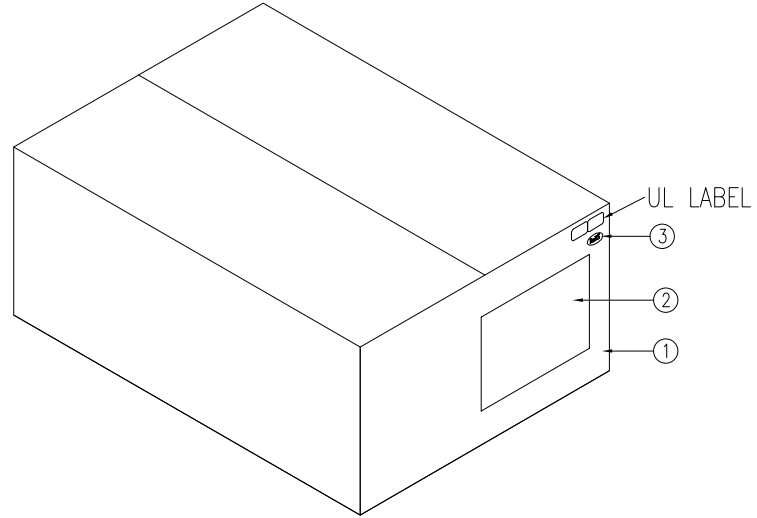
⑤

THE LABEL IS STUCKED IN THE MIDDLE.



④

1PCS PRODUCTS PUT INTO THE PE BAG



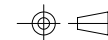
5	HMLSB14741	LABEL:14*74MM,WHT	1
4	RMBZIP0043	ZIP BAG:PE,350*160MM,T=6C,CLEAR,R2	1
3	RMLSW30201	LABEL:Coated Paper,30*20,GRN,with RoHS logo	1
2	HMLSB00401	LABEL:Synthetic Paper,100*40MM,WHT,BLANK,HF	1
1	RMBCTN0019	CARTON:"E"TYPE,590*240*200MM ,W/O Logo and Mark	1
ITEM	VENDOR P/N	DESCRIPTION	QTY

This drawing is the property of Serial Cables Corporation and is delivered on the express condition that it is not to be disclosed, reproduced or used, in whole or in part, for manufacture or sale by anyone other than Serial Cables Corporation without its prior consent, and that no right is granted to disclose or use any information in this drawing.



TITLE:
SC P/N:MCI06-16X-16X-0.3M
MCI0 16X STR TO MCI0 16X STR ASSY

DWG. No.: RMC124-1628



SCALE: NONE

SHEET 4 OF 4

UNIT: MM

SIZE: A4

REV.: AX1

GENERAL TOLERANCES

.X:	± 0.5
.XX:	± 0.3
.XXX:	± 0.15
ANGULAR:	± 1°

DRAWN:	DEVIN ZHOU	DATE:	06/11/2024
CHECKED:	WILSON HU	DATE:	06/11/2024
APPROVED:	JEFF HE	DATE:	06/11/2024