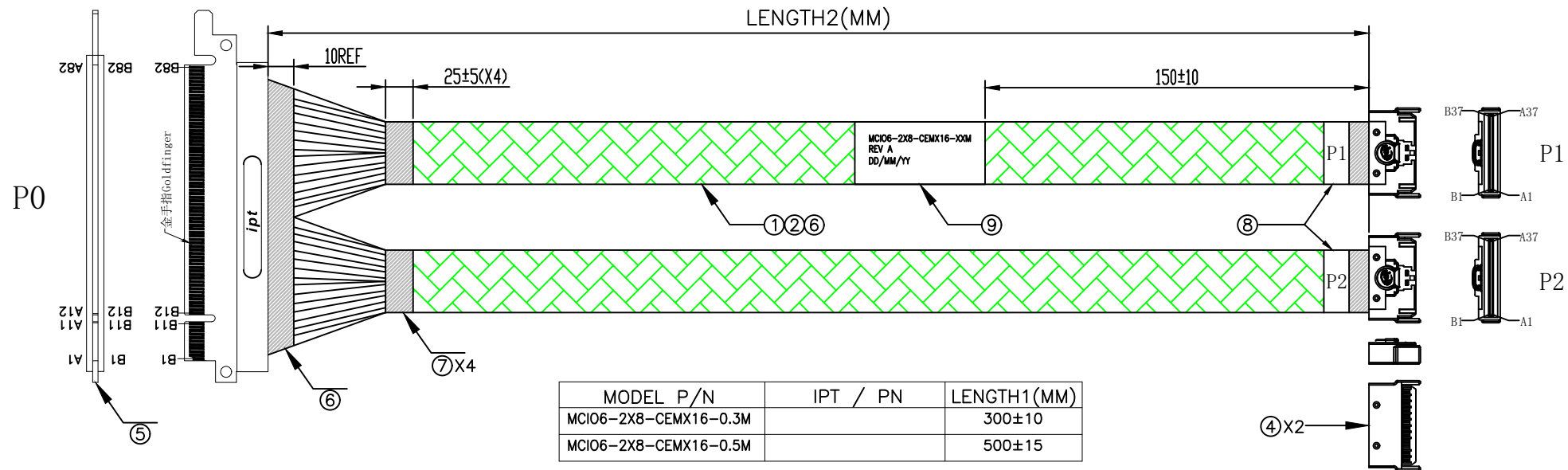
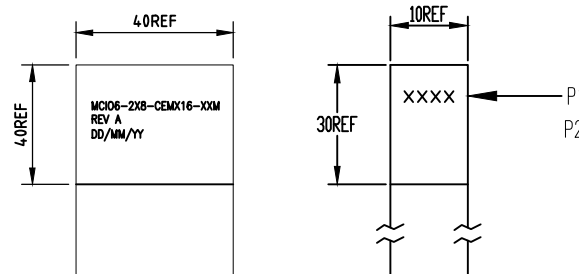


5	DATE	DESCRIPTION OF CHANGE	REV
	2024-04-25	XXXXXXXX	A



ELECTRICAL CHARACTER:

- 100% OPEN & SHORT & MISS-WIRING & INTERMITTENCE TEST
100%开路、短路、漏线、间歇试验
- CONDUCTIVE RESISTANCE: 3Ω MAX
导电电阻:3Ω Max
- INSULATION RESISTANCE: 10 MΩ
绝缘电阻:10 MΩ
- HI-POT TEST: 300VDC FOR 10ms.
高压测试:300VDC 10ms。
- THIS PRODUCT MEETS RoHS2.0 & PCIE Gen 6.0
本产品符合RoHS2.0& pcie Gen 6.0

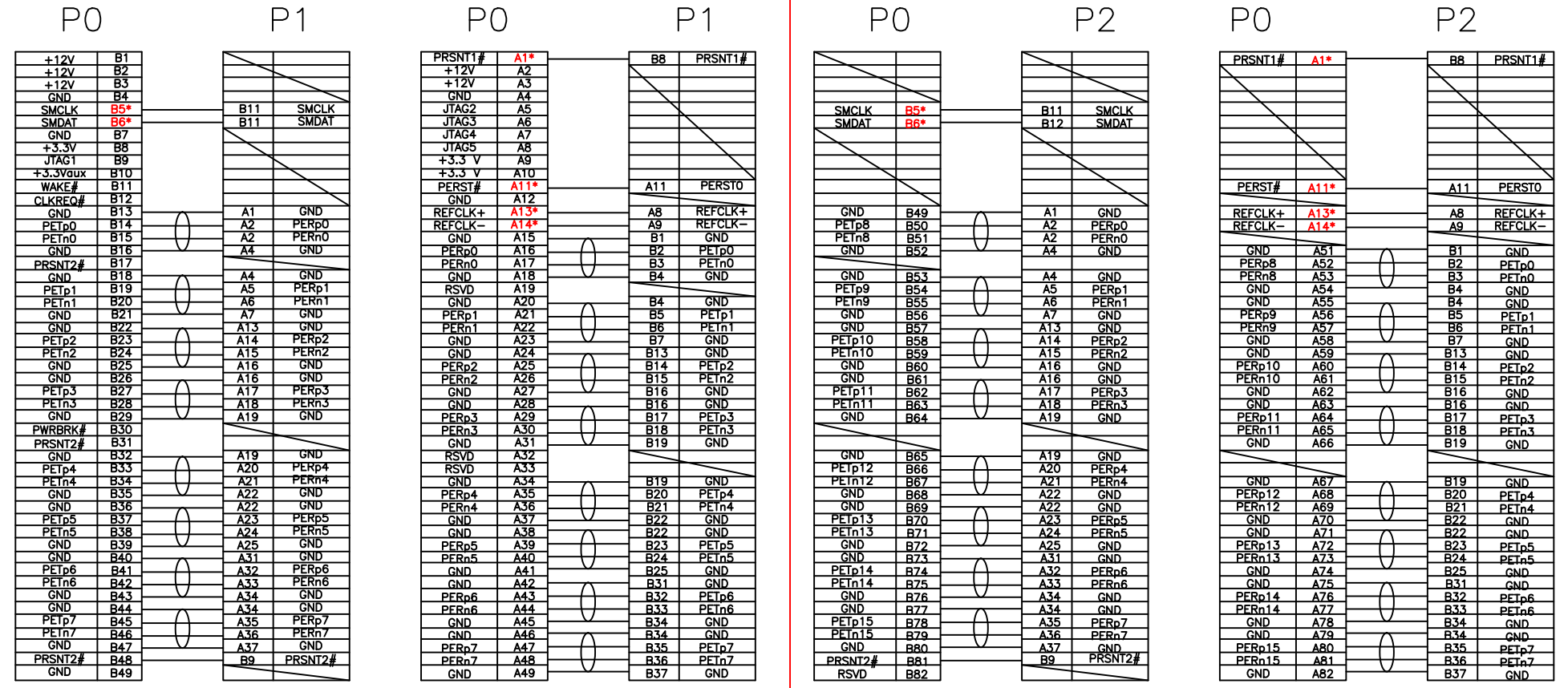


⑨	LABLE	WHITE LABEL:40*40MM	1	PCS	
⑧	LABLE	WHITE LABEL:10*30MM	2	PCS	
⑦	Acetate Tape	Acetate Tape: specification: 25mm*50m;(High degree of adhesion)	-	MM	
⑥	Acetate Tape	Acetate Tape: specification: 10mm*50m;(High degree of adhesion)	-	MM	
⑤	Nylon net	TPT Nylon net (96 ingots 0.25*12 mesh single strand) OD: 9-20mm GREEN	-	MM	
④	connector	SFF-1016 8X MCI0 connector	2	SET	
③	connector	PCle X16 Gold Finger	1	SET	
②	WIRE	UL1061 30AWG -LF-	-	MM	
①	cable	SAS 29AWG 85Ω HF PCIE: 6.0 低损耗 (P06S62901)	-	MM	
NO.	NAME	IPT NO.	DESCRIPTION	Q'TY	UNIT

TITLE		X2 MCI0-8X TO CEMX16 GOLEFINGER				SHEET	1/2
CUSTOMER		CUSTOMER P/N	MCI06-2X8-CEMX16-XXM	DRAWING	liupeng		
DWG NO.	WIPT20240425008	UNIT	SCALE	REV	VIEW	CHECKED	liupeng
SC P/N		mm	NONE	A	APPROVAL		

DATE	DESCRIPTION OF CHANGE	REV
2024-04-25	XXXXXXXX	A

WIRING TABLE



*表示并接



TITLE	X2 MCIO-8X TO CEMX16 GOLEFINGER					SHEET	2/2
CUSTOMER				CUSTOMER P/N	MCIO6-2X8-CEMX16-XXM	DRAWING	liupeng
DWG NO.	WIPT20240425008		UNIT	SCALE	REV	VIEW	liupeng
SC P/N			mm	NONE	A	APPROVAL	